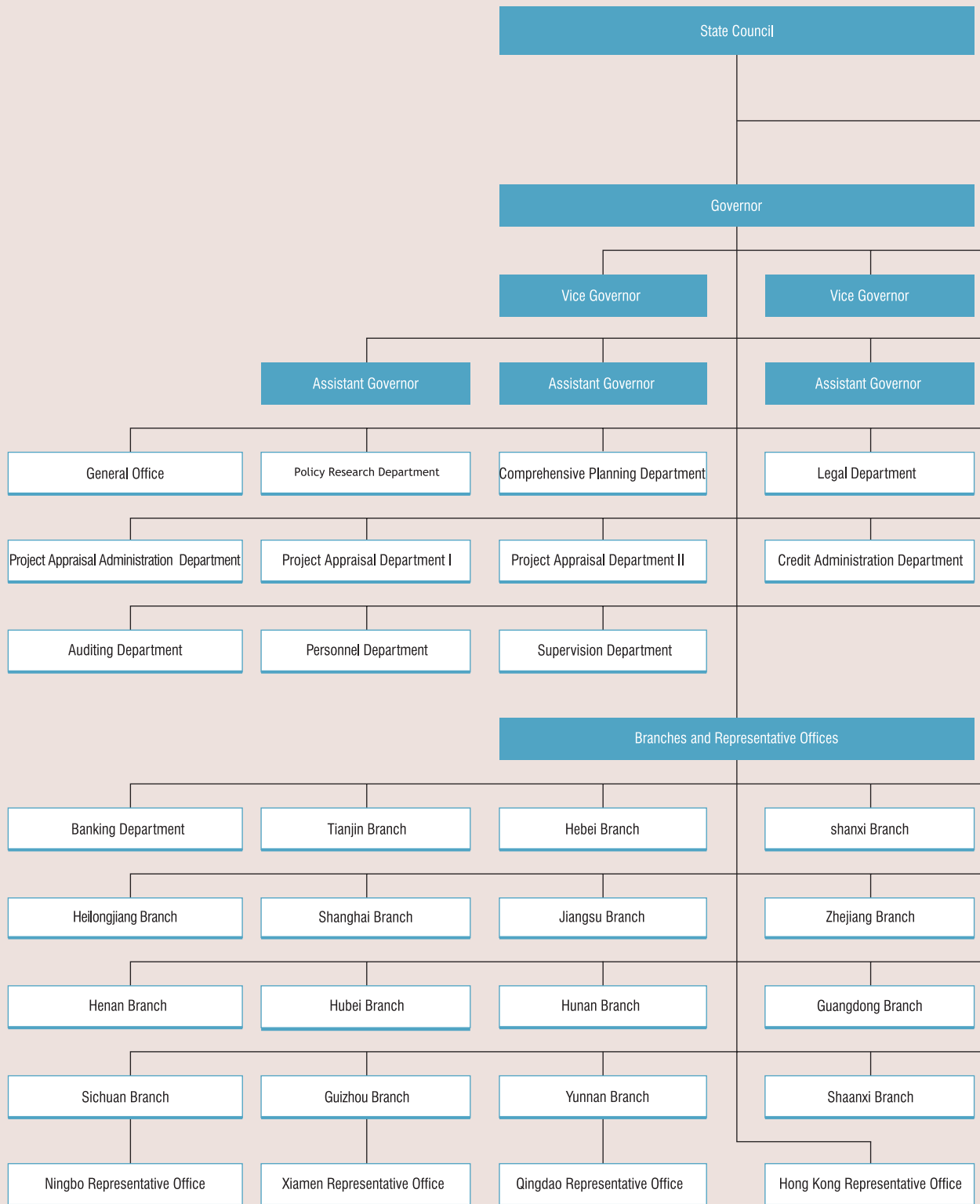


ORGANIZATION STRUCTURE



Board of Supervisors

Vice Governor

Vice Governor

Chief Compliance Officer

Chief Financial Officer

Chief Economist

Chief Auditor

Finance & Accounting Department

Treasury Department

Business Development Department

Credit Risk Management Department

Assets Restructuring and Management Department

International Finance Department

Large Corporate Lending Department

Investment Banking Department

Education and Training Department

Operating Center

General Logistics Department

Retired Staff Department

Inner Mongolia Branch

Liaoning Branch

Dalian Branch

Jilin Branch

Anhui Branch

Fujian Branch

Jiangxi Branch

Shandong Branch

Shenzhen Branch

Guangxi Branch

Hainan Branch

Chongqing Branch

Gansu Branch

Xinjiang Branch

Qinghai Branch

Ningxia Branch

ORGANIZATION STRUCTURE

BANKING DEPARTMENT

Add: No.158 Fuxingmenwai Street, COSCO Mansion,
Beijing
(Tel): (010) 66412212
(Fax): (010) 66412282
(Zip): 100031

TIANJIN BRANCH

Add: No.1, Qixiangtailu, Heping District, Tianjin
(Tel): (022) 23515757
(Fax): (022) 23515742
(Zip): 300070

HEBEI BRANCH

Add: No.55, Zhengdonglu, Shijiazhuang
(Tel): (0311) 6986564
(Fax): (0311) 8625969
(Zip): 050011

SHANXI BRANCH

Add: No.268, Fuxijie, Taiyuan
(Tel): (0351) 4937222
(Fax): (0351) 4937224
(Zip): 030002

INNER MONGOLIA BRANCH

Add: No.88, Xinchengdongjie, Huhhot
(Tel): (0471) 4690308
(Fax): (0471) 4690306
(Zip): 010010

LIAONING BRANCH

Add: No.109, Qingniandajie, Shenyang
(Tel): (024) 22953502
(Fax): (024) 22953371
(Zip): 110014

DALIAN BRANCH

Add: No.8, Zhongshan Plaza, Zhongshan District, Dalian
(Tel): (0411) 2810918
(Fax): (0411) 2633839
(Zip): 116001

JILIN BRANCH

Add: No.3, Dongminzhudajie, Changchun
(Tel): (0431) 8922805
(Fax): (0431) 8922827
(Zip): 130061

HEILONGJIANG BRANCH

Add: No.6-1, Wenfujie, Harbin
(Tel): (0451)2663101
(Fax): (0451) 2663130
(Zip): 150040

SHANGHAI BRANCH

Add: F33-36, No.500, Pudongnanlu, CDB Plaza,
Shanghai
(Tel): (021)38784999
(Fax): (021)58883659
(Zip): 200120

JIANGSU BRANCH

Add: No.188, Guangzhoulu, Nanjing
(Tel): (025) 3276222
(Fax): (025)3276204
(Zip): 210024

ZHEJIANG BRANCH

Add: No.108, Huancheng Xi Lu, Hangzhou
(Tel): (0571) 85786088
(Fax): (0571) 85786094
(Zip): 310006

ANHUI BRANCH

Add: No.246, Wuhu Street, Hefei
(Tel): (0551) 2867889
(Fax): (0551) 2875868
(Zip): 230061

FUJIAN BRANCH

Add: 15A Floor, Insurance Plaza, No.233, Wusilu, Fuzhou
(Tel): (0591) 7856464
(Fax): (0591) 7092294
(Zip): 350003

JIANGXI BRANCH

Add: No.5 Nanyilu, Shengfudayuan, Nanchang
(Tel): (0791) 6262332
(Fax): (0791) 6262659
(Zip): 330046

SHANDONG BRANCH

Add: F9-11, No.2-1, Maanshanlu, Shandong Mansion,
Jinan
(Tel): (0531) 5198100
(Fax): (0531) 5198282
(Zip): 250002

ORGANIZATION STRUCTURE

HENAN BRANCH

Add: No.28 Nongyelu, Zhengzhou
(Tel): (0371) 5714314
(Fax): (0371) 5714314
(Zip): 450008

HUBEI BRANCH

Add: F10, Jinjin Garden A, No.66, Zhongbeilu, Wuhan
(Tel): (027) 87326666
(Fax): (027) 87326563
(Zip): 430071

HUNAN BRANCH

Add: F8, Jinyuan Plaza, South Building, No.465-467,
Furongzhonglu, Changsha
(Tel): (0731) 5558888
(Fax): (0731) 5163160
(Zip): 410007

GUANGDONG BRANCH

Add: 15A Foreign Trade Plaza, No.351, Tianhelu,
Guangzhou
(Tel): (020) 38807168
(Fax): (020) 38809557
(Zip): 510620

SHENZHEN BRANCH

Add: International Science and Technology Plaza,
Shennanzhonglu, Shenzhen
(Tel): (0755) 83760388
(Fax): (0755) 83760185
(Zip): 518033

GUANGXI BRANCH

Add: No.38-2, Minzudadao, Taian Mansion F23, Nanning
(Tel): (0771) 5879611
(Fax): (0771) 5878601
(Zip): 530022

HAINAN BRANCH

Add: No.81, Binhaidadao, Nanyang Mansion F1-2,
Haikou
(Tel): (0898) 68551933
(Fax): (0898) 68551933
(Zip): 570105

GANSU BRANCH

Add: No.507, Binhe Donglu, Lanzhou
(Tel): (0931) 8854771
(Fax): (0931) 8836380
(Zip): 730030

XINJIANG BRANCH

Add: No.2-25, Dongfenglu, Urumqi
(Tel): (0991) 2335001
(Fax): (0991) 2335002
(Zip): 830002

NINGXIA BRANCH

Add: No. 43, Xinhua Dong Street F4, Yinchuan
(Tel): (0951) 6010487
(Fax): (0951) 6010483
(Zip): 750001

QINGHAI BRANCH

Add: No. 15, Wuxixi Street, CCB Dianli Branch Building,
Xining
(Tel): (0971) 6301913
(Fax): (0971) 6303817
(Zip): 810008

CHONGQING BRANCH

Add: No.68, Zouronglu, Daduhui Plaza, Chongqing
(Tel): (023) 63748000
(Fax): (023) 63748100
(Zip): 400010

SICHUAN BRANCH

Add: No.47, Renminnanlusiduan, Chengdu
(Tel): (028) 85248399
(Fax): (028) 85248383
(Zip): 610041

GUIZHOU BRANCH

Add: No. 102, Xinhua Street, Fuzhongshangwu Plaza,
Guiyang
(Tel): (0851) 5530101
(Fax): (0851) 5512932
(Zip): 550002

YUNNAN BRANCH

Add: No.158, Dongfengxilu, Kunming
(Tel): (0871) 3634164
(Fax): (0871) 3634001
(Zip): 650031

SHANXI BRANCH

Add: No.2 Gaoxinyilu, CDB Plaza, Xi'an
(Tel): (029) 7660578
(Fax): (029) 7660581
(Zip): 710075

ORGANIZATION STRUCTURE

HONG KONG REPRESENTATIVE OFFICE

Add: Suite 3307-3308 33/F One International Finance Center, 1
Harbour View Street, Central, Hong Kong
(Tel): (+852) 28016218
(Fax): (+852) 25304083